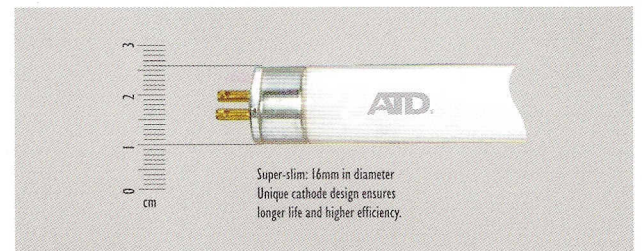
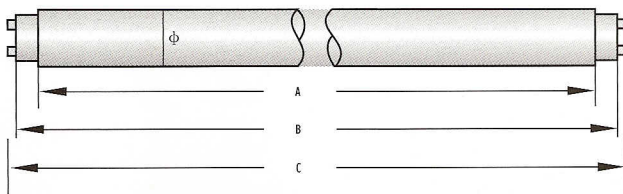
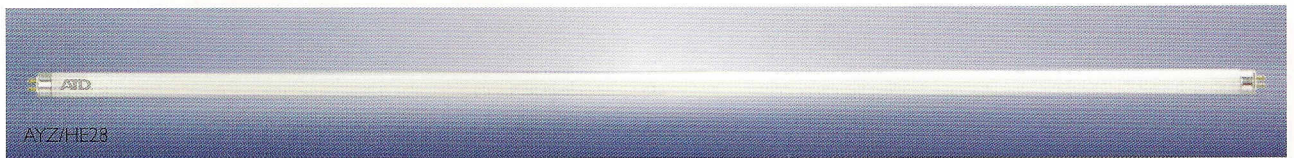




ENERGY SAVING EFFECT OF T5 REFLECTING MATERIAL

Much higher efficiency of light source increased from 70lm/w to 95lm/w, the usage efficiency increases by 36%. Reflectance of new material increased from 85% to 95%, the usage efficiency increases by 10%. Shortening of the diameter and optimization of the operating environment of the light source make the usage efficiency 15% increased. A comparison of the usage efficiency between T5 and T8: $(1.36 \times 1.10 \times 1.15) = 1.72, 72\%$ increased.



ATD -brand T5 high efficiency linear fluorescent lamps, as a new generation of light sources, combining the latest phosphor technology for reduced lumen depreciation, higher temperature operation for higher luminaire light output ratio, and electronic ballasts with low losses, therefore provide the highest luminaire efficiency. The diameter of the new T5 lamps is only 16mm (5/8 of an inch) compared to the old style T8 lamps 26mm. However, the decreased diameter produces a significant increase in the luminance of the T5 light source, approximately 30% higher than a tri-phosphor T8 tube.

Model	Watts (W)	Colour	Average life (Hrs)	Carton Qty
HZ-Y28/2700K	28	2700K	10000	50
HZ-Y28/5000K	28	5000K	10000	50
HZ-Y28/6500K	28	6500K	10000	50
HZ-Y21/2700K	21	2700K	8000	50
HZ-Y21/5000K	21	5000K	8000	50
HZ-Y21/6500K	21	6500K	8000	50
HZ-Y14/2700K	14	2700K	8000	50
HZ-Y14/5000K	14	5000K	8000	50
HZ-Y14/6500K	14	6500K	8000	50
HZR-Y28	28	Red	10000	25
HZY-Y28	28	Yellow	10000	25
HZB-Y28	28	Blue	10000	25